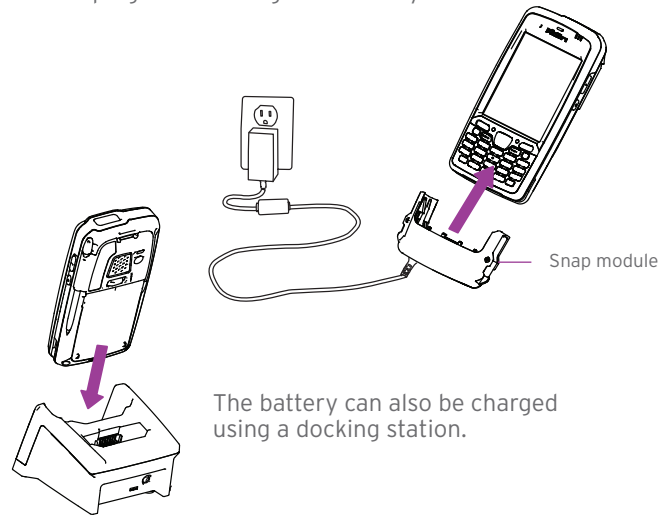


2 Charge the battery.

Slide the snap module onto the base of the EP10. Attach the power adaptor to the module and plug it in to charge the battery.



The battery can also be charged using a docking station.

Note: The snap modules and the docking station have unique power adaptors. They are not interchangeable. Use only the universal AC power adaptor approved by Psion Inc. for the EP10.

Allow the battery to charge for at least 4 hours before use.



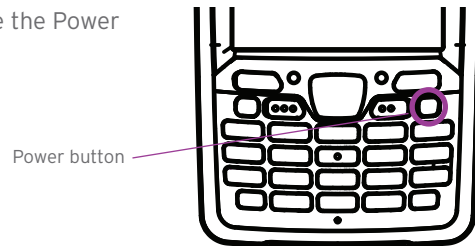
Note: Full battery performance is only reached after the first few full charge/discharge cycles.



0 - 40° C
32 - 104° F

3 Turn the unit on.

Press and release the Power button.



4 Connect the EP10 to the PC.

Connect through a docking station or a snap module with a USB port.

5 Install and configure data transfer software.

Use ActiveSync® (Windows® XP® or earlier) or Mobile Device Center® (Windows Vista® or Windows 7®) to establish a connection between the EP10 and the PC and synchronize your e-mail, contacts, and so on.

For either ActiveSync or Mobile Device Center, go to the following website:

<http://go.microsoft.com/fwlink/?LinkId=147001>

6 To turn the EP10 off:

> Press and release the Power button.

RESETTING THE UNIT

To perform a warm reset:

- > Press and hold down the [BLUE/FN] key and the Power button simultaneously for a few seconds.

During a warm reset, running programs are halted. The contents of the flash memory and the registry are preserved. Keep in mind, however, that RAM content is not preserved.

Psion, Psion Teklogix, and the EP10 are trademarks of Psion Inc. Other product names mentioned in this document are trademarks or registered trademarks of other hardware, software, or service providers and are used herein for identification purposes only.



8 0 0 0 2 2 8
Rev. A

Psion

EP10™

HAND-HELD
COMPUTER

QUICK START
GUIDE



March 29, 2011
PN 8000228.A

ISO 9001 Certified
Quality Management System

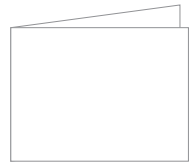
CONTENTS OF THE BOX



EP10



This guide



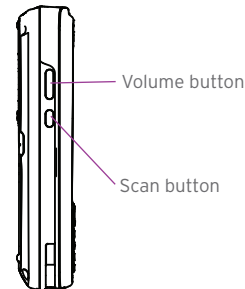
Additional documentation
(dependant on order)

FEATURES

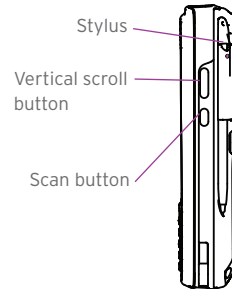
FRONT VIEW



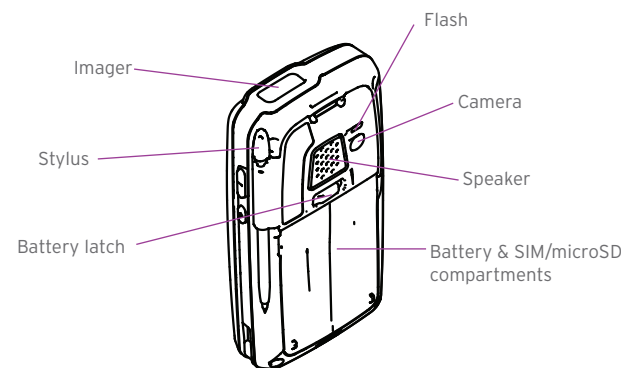
LEFT VIEW



RIGHT VIEW



BACK VIEW



Note: Each EP10 is shipped with a hand strap attached. The hand strap is not shown here.

MICROSD & SIM CARD SLOTS

Note: If the EP10 is equipped with a CDMA radio, a SIM card slot is not present.

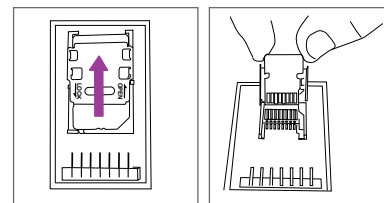
To access the card slots:

- > Unloop the top of the hand strap from the EP10 to access the battery latch.
- > Slide the battery latch to the right to release the battery.

Important: A label in the shape of a microSD card is affixed to the card door. Don't mistake the label for an actual microSD card.

For units equipped with a CDMA radio:

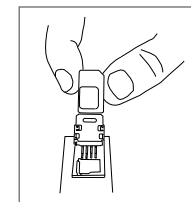
- > Slide the card door up to unlock it. Flip it open.
- > Slide the microSD card onto the guides on the SD door - position the card with the connector pads at the bottom so that when the door is closed, they make contact with the connectors on the unit.
- > Close the card door, and slide it down to lock it in place.



For units equipped with a UMTS radio, both a SIM card slot and a microSD slot are present.

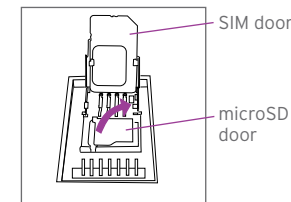
To insert the SIM card:

- > Slide the card door up to unlock it. Flip it open.
- > Slide the SIM card onto the guides on the SIM card door - position the card with the connector pad visible so that when the door is closed, it makes contact with the connectors on the unit.

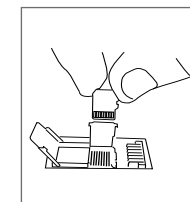


To insert the microSD card, the SIM card door must remain open:

- > Flip up the left side of the microSD door. Note that this door is hinged on the right.



- > Slide the microSD card onto the guides on the card door with the connector pads at the bottom.
- > Gently snap the microSD door closed.
- > Close the SIM card door, and slide it down to lock it in place.



GETTING STARTED

1 Insert the battery.

Insert the bottom of the battery first. Press down firmly to ensure that it is securely seated in the EP10.

